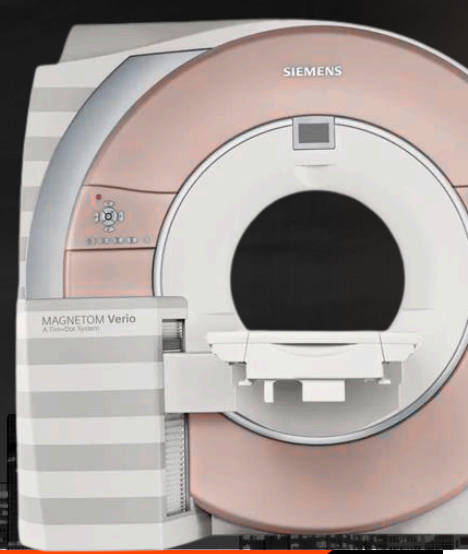


DFW MRI INNOVATING THE FUTURE

Arlington Location

Your Window to a Healed Tomorrow.



Arlington Features:

- Siemens Verio 3T MRI
- Siemens Somatom Scope CT 16 Slice
- Siemens Multix Fusion MAX XRAY
- MR Weight Capacity 550 lbs
- SWI
- DTI
- MRA
- CTA

1106 W. Arbrook Blvd #104,
Arlington, TX 76015



SCAN FOR RX TEMPLATE!



ARLINGTON

Scheduling: Fax@dfwopenmri.com
Reductions: Reductions@dfwopenmri.com
Billing: Billing@dfwopenmri.com
Records Request: Records@dfwopenmri.com
Phone: 214-320-1400
Fax: 214-320-1402

SIEMENS

Contact Us



www.dfwopenmri.com



CONTACT INFO:

Phone: 214-320-1400
Fax: 214-320-1402
Scheduling: Fax@dfwopenmri.com
Reductions: Reductions@dfwopenmri.com
Billing: Billing@dfwopenmri.com
Record Requests: Records@dfwopenmri.com

Your Window to a Healed Tomorrow.

DFW MRI DALLAS

Corporate Office
 1450 Regal Row,
 Dallas, Texas 75247



DALLAS

SERVICES AVAILABLE

- Wide Bore MRI 3.0T High Field with AIR Recon DL
- SWI
- CT
- MR Weight Capacity 500 lbs.
- DTI
- MRA
- CTA
- X-ray



DFW MRI GARLAND

3921 Broadway Blvd,
 Garland, Texas 75043



GARLAND

SERVICES AVAILABLE

- Wide Bore MRI 1.5T High Field with AIR Recon DL
- SWI
- CT
- MR Weight Capacity 500 lbs.
- DTI
- MRA
- CTA
- X-ray

NEW LOCATION



DFW MRI PLANO

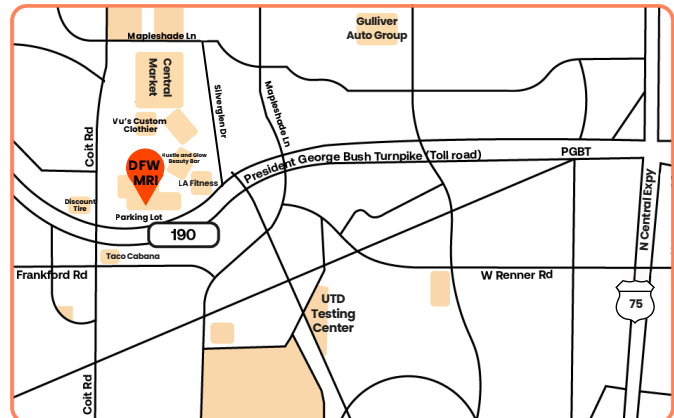
Market Plaza Shopping Center
 3801 W. PGBT Hwy. #118,
 Plano, Texas 75075



PLANO

SERVICES AVAILABLE

- Open MRI 1.2T High Field
- No CT
- MR Weight Capacity 660 lbs.
- MRA
- X-ray



DFW MRI ARLINGTON

Near The Parks Mall
 1106 W. Arbrook Blvd #104,
 Arlington, Texas 76015



ARLINGTON

SERVICES AVAILABLE

- Wide Bore MRI 3.0T High Field
- SWI
- CT
- MR Weight Capacity 550 lbs.
- DTI
- MRA
- CTA
- X-ray

